

Key Tag Shape Options: 13 Standard Shapes

Material: .030 mil Polyester/Teslin 3-part laminate

Bar Code Format: Code 39

“STANDARD SHORT” KEYTAG

2.0" x 1.0"
.125" round corners
with .1875" hole



“OVAL” KEYTAG

2.625" x .625" x 1.125"
.125" round corners
with .1875" hole



“STANDARD” KEYTAG

2.625" x 1.125"
.125" round corners
with .1875" hole



“RECTANGLE” KEYTAG

2.5" x .75"
.125" round corners
with .1875" hole



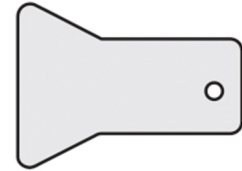
“S” KEYTAG

2.625" x 1.125" x 1.375"
.125" round corners
with .1875" hole



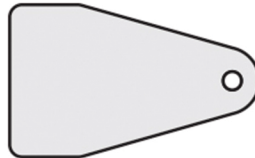
“Y” KEYTAG

2.385" x 1.75"
.125" round corners
with .1875" hole



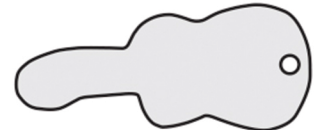
“TRIANGLE” KEYTAG

2.5625" x 1.5625"
.125" round corners
with .1875" hole



“GUITAR” KEYTAG

3.00" x .125"
with .1875" hole



“WINE” KEYTAG

3.00" x .875"
with .1875" hole



“BOTTLE” KEYTAG

3.00" x .125"
with .125" hole



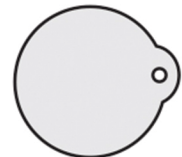
“SHOE” KEYTAG

2.80" x .1.5"
with .1875" hole



“CIRCLE W/TAB” KEYTAG

1.625" x .1.5"
with .125" hole



“CIRCLE” KEYTAG

1.5" x .1.5"
with .125" hole

