



THE HIGH-PERFORMANCE AND VERSATILE CARD PRINTER



Ideal for integration into a business solution, Altess personalizes very high quality color cards. Thanks to a large number of personalization options, Altess is adapted to a wide range of uses, from printing the most basic to the most sophisticated of cards.

HIGH PERFORMANCE

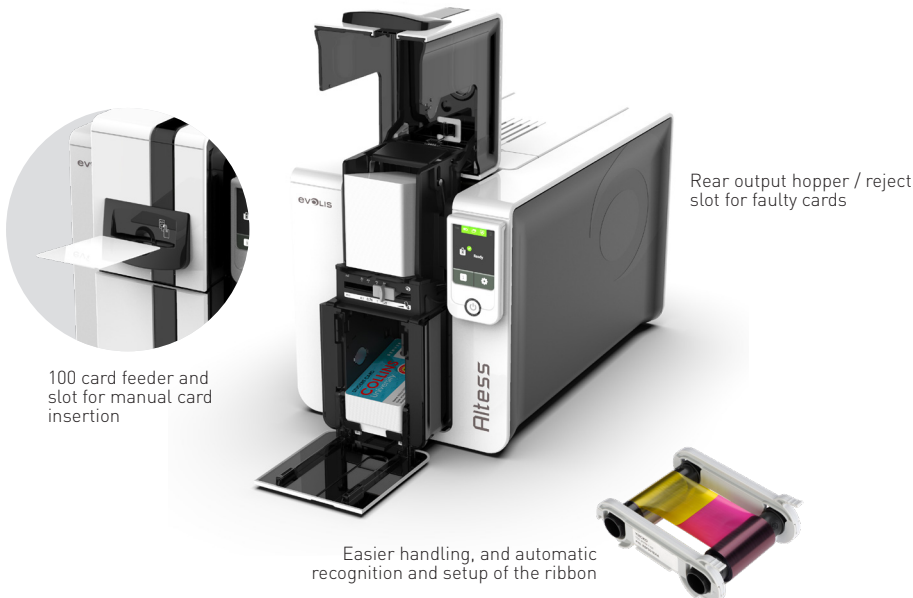
- Equipped with a photographic resolution and a print speed of 225 color cards per hour, Altess stands out with its high performance.
- Altess personalizes up to 100 cards without interruption. It is also capable of managing exceptional card designs.

CONFIGURATION ON REQUEST

- Depending on your requirements, Altess can print cards either single or double-sided.
- Equip the printer with a card lamination module, encoders for magnetic stripes, contact and contactless smartcards, and, for an increased level of security, the Kineclipse® process for masking data.

PERFECT INTEGRATION

- The Altess EPS software architecture is designed to enable easy integration with your current systems.
- The Altess printer can be used in any work environment thanks to its compact design and its low noise level.



UNIQUE FUNCTIONALITY

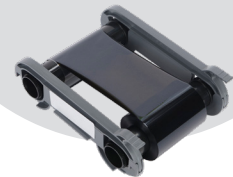
Kineclipse® technique for masking the residual characters on the printing ribbon

Alison Williams
10/04/1995
AWILLIAMS95

AWILLIAMS95
10/04/1995
AWILLIAMS95

Without Kineclipse®

With Kineclipse®



MAIN FEATURES

GENERAL FEATURES

- Color sublimation directly on the card / Resin thermal transfer
- Single or double-sided printing, edge to edge, upgrade kit for optional double-sided printing
- Standard resolution 300 x 300 dpi
- Resolution customizable to 300 x 600 dpi (monochrome and color printing, except Kineclipse®) or 300 x 1200 dpi (monochrome printing only, except Kineclipse®)
- 32 MB RAM – 64 MB optionally available¹
- Optional double-sided lamination module (CLM)

PRINT SPEED¹

- Single-sided:
 - Color (YMCKO): 190 to 225 cards/hour
 - Monochrome: 700 to 900 cards/hour
- Double-sided:
 - Color (YMCKO-K): 140 cards/hour

CARD MANAGEMENT AND SPECIFICATIONS

- Feeder capacity: 100 cards (0.76 mm – 30 mil)
- Slot for manual insertion of exceptional designs
- Output hopper capacity: 100 cards (0.76 mm – 30 mil)
- Reject hopper/rear hopper capacity: 50 cards (0.76 mm – 30 mil)
- Card thickness:
 - Feeder : 0.50 - 1.25 mm (20 - 50 mil), gauge adjustment
 - Manual insertion slot: 0.50 - 0.75 mm (20 - 30 mil)
- Types of cards: PVC cards, composite PVC cards, PET cards, ABS¹ cards, special varnishes¹
- Card format: ISO CR80 – ISO 7810 (53.98 mm x 85.60 mm)

INTERFACES

- USB (1.0, 1.1, 2.0, 3.0), cable supplied
- Ethernet TCP-IP 10BaseT, 100BaseT (Traffic Led)

ADDITIONAL ENCODING MODULES

- Available modules:
 - ISO 7811 HiCo/LoCo, JIS2 magnetic stripe encoder
 - Smartcard contact station ISO 7816-2
 - Contact smartcard encoder – PC/SC, EMV 2000-1
 - Contactless smartcard encoder – ISO 14443A, B, ISO15693, MIFARE, DESFire, HID iCLASS, UHF (standard conformity: EPC C1 Gen2 / ISO18000-6C ETSI EN 302 208 or FCC part 15.247)
 - Other specific encoders on request
- Internal USB connections
- USB encoding on IP via additional USB Net Server module on request
- Combinable options
- On-site or factory fitting

EVOLIS HIGH TRUST® RIBBONS

- To maximize the quality and lifetime of the printed cards, the service life of the print head, and the overall reliability of your printer, use Evolis High Trust® ribbons.
- Automatic recognition and setup
 - Ribbon inserted in a cassette for easier handling
 - Ribbon capacity:
 - YMCKO: 300 prints/roll
 - YMCKO-K: 200 prints/roll
 - ½ YMCKO: 400 prints/roll
 - KO: 600 prints/roll
 - Monochrome black ribbon: 2000 prints/roll (integrated ribbon saving)

SECURITY

- Space for Kensington® security lock
- Data encryption for magnetic encoding¹
- Kineclipse® technique for masking data on printing ribbon (optional)

DISPLAY

- Color touchscreen
- Graphic printer notifications²: feeder empty/almost empty, cleaning alerts, ribbon finished/almost finished, etc.

SOFTWARE

- Supplied with Evolis Premium Suite® for Windows®:
 - Printer driver
 - Evolis Print Center for the administration, management, and configuration of the printer
 - Evolis Printer Manager for visual notification³
 - 24/7 online support
 - Compatible with Windows® (32/64 bits): XP SP3, Vista, W7, W8, W10
- Supplied with the Mac OS X driver (from 10.6)
- Linux OS available on request
- Evolis Premium SDK for monitoring the printer remotely, facilitating and accelerating integration with IT systems

ECO-DESIGN, CERTIFICATION, AND DECLARATION OF CONFORMITY

- Standby mode and reduced power consumption
- CE, FCC, ICES, VCCI, CCC
- RoHS

DIMENSIONS AND WEIGHT

- Dimensions (H x W x D): 247 x 205 x 394 mm (9.72" x 8.07" x 15.51")
- Weight: 4.14 kg (8.82 lbs)

WARRANTY CONDITIONS

- 3-year warranty (printer and print head)⁴
- Optional extended warranty available

¹ Under specific conditions / ² Depends on your version of Windows® / ³ Requires the .NET 4.0 client profile
⁴ Warranty subject to strict compliance with specific usage conditions and use of Evolis High Trust® ribbons



HQ | EUROPE - MIDDLE-EAST - AFRICA

Evolis - 14 avenue de la Fontaine - ZI Angers-Beaucouzé - 49070 Beaucouzé - France
 T +33 (0) 241 367 606 - F +33 (0) 241 367 612 - info@evolis.com

US & CANADA - Boston - evolisnortham@evolis.com

LATIN AMERICA - Miami - evolislatam@evolis.com

ASIA-PACIFIC - Singapore - evolisasia@evolis.com

CHINA - Shanghai - evolischina@evolis.com

JAPAN - Tokyo - evolisljapan@evolis.com

INDIA - Mumbai - evolisindia@evolis.com